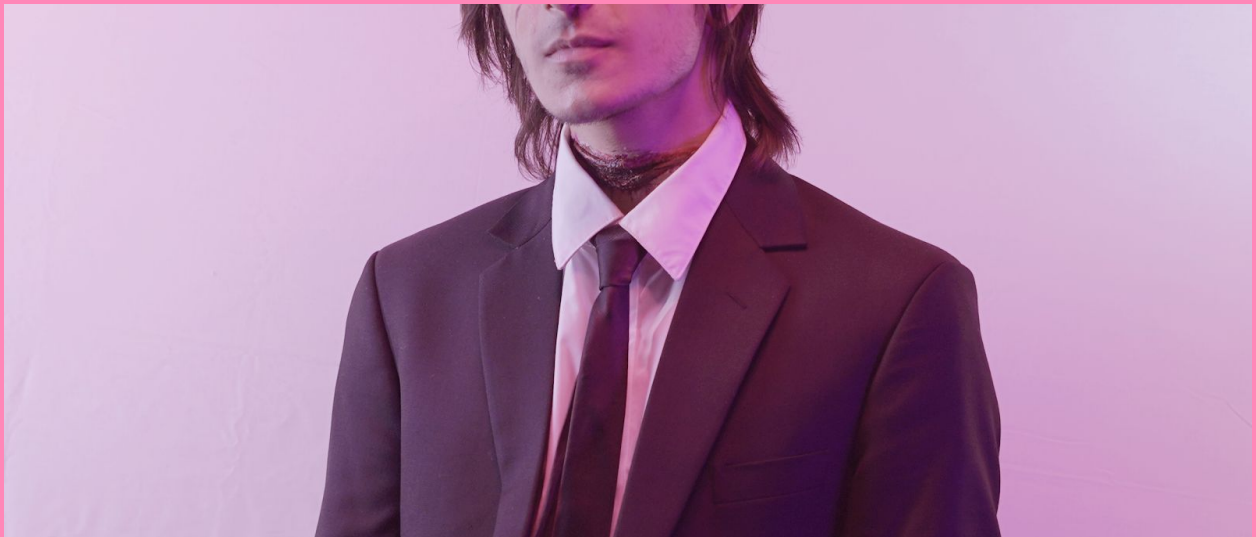


HAIT

INTRODUCTION



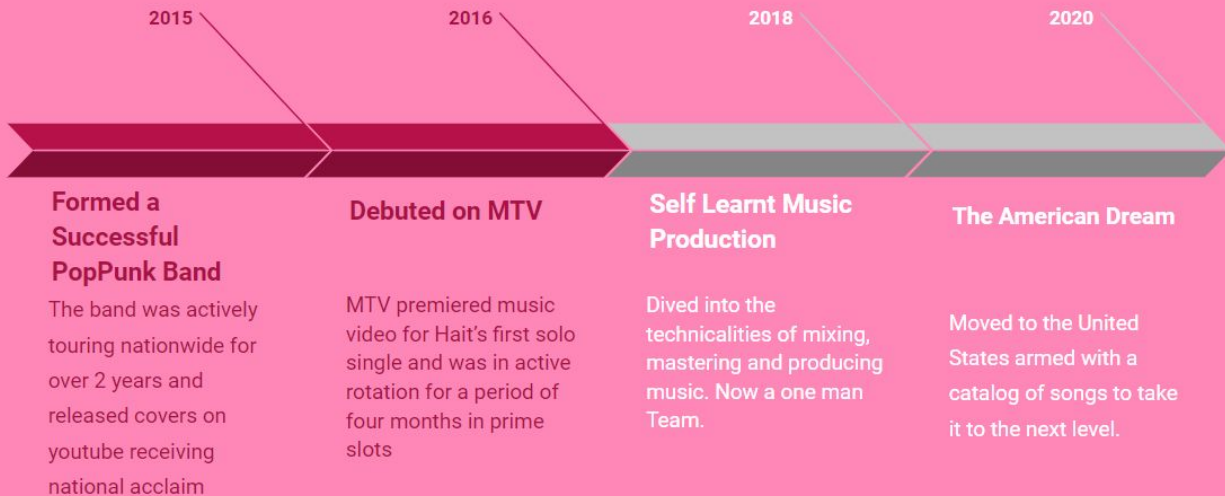
A RIGHT MAN IN THE WRONG PLACE CAN MAKE ALL THE DIFFERENCE IN THE WORLD. HAIT IS A MISFIT BETWEEN THE MISFITS, AN ARTIST WHO BLURS LINES BETWEEN THE GENRES. HIS MUSIC IS VERY EMOTION DRIVEN WHILE STILL BEING EXTREMELY CATCHY, A PERFECT MARRIAGE BETWEEN POWERFUL LYRICAL THEMES AND MELODIOUS ELEMENTS

OF MUSIC RESULTING IN A UNIQUE RELATABLE EXPERIENCE FOR WHICH HIS FANS ALWAYS COME BACK FOR MORE.

HAI'S UNIQUE VOICE IS ONE OF HIS MANY STRONG QUALITIES THAT SET HIM APART FROM OTHER SINGERS, THE PRODUCTION IN HIS MUSIC INVOLVES A LOT OF ELEMENTS FROM THE WORLD OF HIP HOP , ROCK, ALTERNATIVE, POP, FROM PLAYING WITH 808S TO BLENDING THEM WITH CLEAN GUITARS, CALM REVERSE PIANO SECTIONS TO POP DANCE BEATS, MAKING A STATEMENT IN THE FORM OF CREATIVITY FOR THE EXPRESSION OF HIS EMOTIONS AND HIS FANS IS A PRIORITY.



THE JOURNEY



HAIT'S JOURNEY BEGAN IN INDIA , A PLACE NOT SYNONYMOUS WITH AN INTERNATIONAL POP SOUND . GROWING UP THERE WAS A CHALLENGE ESPECIALLY WHILE MAKING MUSIC WHICH WAS IN STARK CONTRAST WITH WHAT WAS BEING OFFERED IN THE REGION.

HAIT SOON REALISED THERE WEREN'T ANY MUSIC PRODUCERS IN THE REGION ESPECIALLY FOR THE QUALITY OF MUSIC HE WAS LOOKING FOR,WITH NO OTHER CHOICE HE TOOK THE CHARGE AND SELF TAUGHT HIMSELF MUSIC PRODUCTION AND FURTHER DEVELOPED HIS SKILL SET IN MIXING AND MASTERING.



HE FOUND HIMSELF A CULT FOLLOWING OF FANS WHO WERE FASCINATED BY HOW HE CREATED SONGS THAT SOUNDED ON PAR WITH THEIR FAVORITE INTERNATIONAL ARTISTS LIKE BILLIE EILLISH ,BRING ME THE HORIZON , ARIANA GRANDE, ETC WHILE BEING AMAZED BY HOW IT WAS MADE BY SOMEONE FROM INDIA OF ALL PLACES.



AFTER RELEASING COVER VIDEOS ON YOUTUBE WHICH GARNERED HUNDREDS OF THOUSANDS OF VIEWS ,HAIT REALISED MOST OF VIEWS WERE COMING FROM EUROPE & UNITED STATES AND DECIDED TO MOVE TO AMERICA TO EXPAND HIS HORIZONS AND CAPTURE A BIGGER AUDIENCE IN THE RIGHT PLACE.

THE MUSIC



SPOTIFY



YOUTUBE



INSTAGRAM

PRESS AND LIVE SHOTS



DROPBOX

LIVE TECH RIDER AND STAGE LAYOUT

3 PIECE BAND SET UP STAGE LAY OUT



BOTH GUITARS GIVE THEIR OUTPUTS FROM LAPTOPS RUNNING GUITAR AMP AND CAB SIMULATIONS
HENCE ONLY NEED AN OUTPUT TO THE MIXING CONSOLE AND NO BACKLINE AMP FROM THE VENUE

SOLO SET STAGE LAYOUT



GUITAR GIVES ITS OUTPUT FROM LAPTOPS RUNNING GUITAR AND CAB SIMULATIONS
HENCE NO BACKLINE AMPS ARE REQUIRED FROM THE VENUE